



STARHOTELS®
PREMIUM

Majestic
TORINO

Majestic

TORINO



A stylish tradition

Located in a beautiful 19th century building with magnificent Art Nouveau windows, the Starhotels Majestic vaunts a strategic position in the heart of Turin, near the Porta Nuova station and the elegant shop-windows of via Lagrange. The hotel is a delightful combination of period charm and contemporary style and its name is reflected in every detail. Its 161 elegant rooms and suites recently refurbished offer comfort, refined style and prestigious furnishings.

The 7 versatile meeting rooms are all equipped with latest-generation technical facilities and can host up to 484 people, providing the perfect venue for business meetings and private events.

Majestic

TORINO



Location

Opposite the Porta Nuova train station, within easy reach of the historic centre, the main destinations and of the elegant shop-windows of via Lagrange

Distances

Railway station: Km 0,1

Highway: Km 5

Airport: Caselle Km 27

Corso Vittorio Emanuele II, 54 - 10123 Torino - ITALY

T +39 011 539153 F +39 011 534963

majestic.to@starhotels.it

starhotels.com

Majestic

TORINO

Restaurant & Bar

In the elegant setting created by the large Art Nouveau-style skylight, Le Regine by Eataly restaurant serves the finest dishes from the Piedmontese tradition alongside appetising international cuisine, taking advantage of an exclusive partnership with Eataly.

With its retro atmosphere, the bar is the ideal place for a light lunch, an aperitif or a relaxing break at any time of day.



Majestic

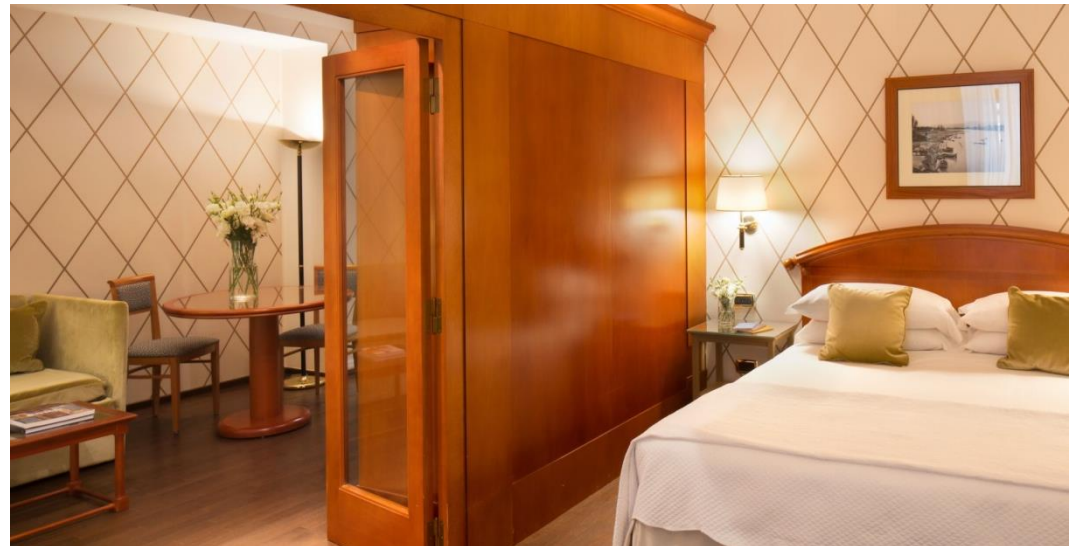
TORINO



161 Rooms

- 67 Classic
- 9 Classic Single
- 61 Superior
- 13 Executive
- 9 Junior Suite
- 2 Suite

The 161 recently refurbished rooms and suites offer comfort and a distinctive style that is at once classic, contemporary, elegant and refined.



Majestic

TORINO



Meetings & Events

Meeting rooms: 7

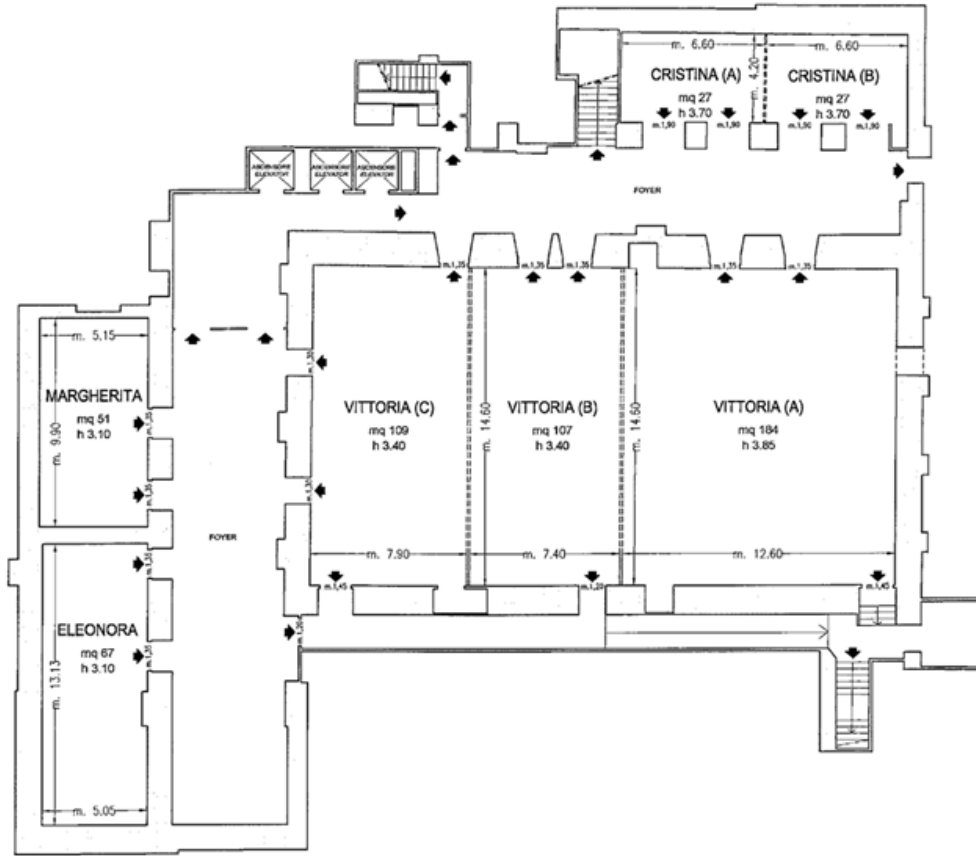
Capacity (theatre style): 484 max

The hotel has 7 versatile meeting rooms, all equipped with latest-generation technical facilities, that can accommodate up to 484 people. A team of expert professionals is at guests' disposal to help organise any kind of event.

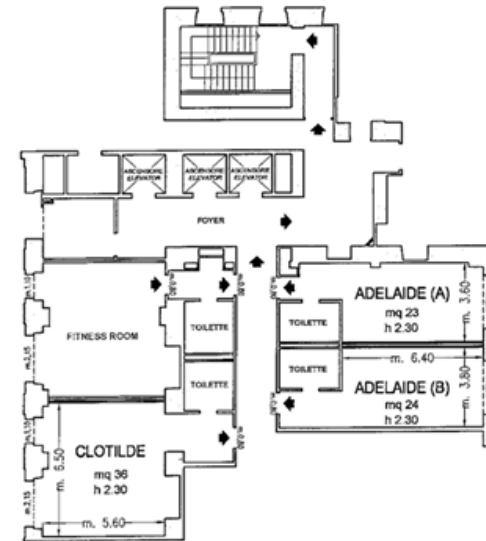


Majestic

TORINO



Piano -1 / Basement



Piano Primo / First Floor

◆ Uscite di sicurezza / Emergency Exits

--- Finestre / Windows

▤ Pareti mobili / Modular Walls

□ Colonne / Columns

Majestic

TORINO

Meeting rooms	Area mq / ft.	L x W mt. / ft.	Height mt. / ft.	Theatre	Class room	Conference table/ U-shape	Cabaret style [^]
Vittoria (A)	184 1979,84	12,60x14,60 41,34x47,90	3,85 12,63	140	70	40	48
Vittoria (B)	107 1151,32	14,60x7,40 47,90x24,28	3,4 11,15	80	50	30	30
Vittoria (C)	109 1172,84	14,60x7,90 47,90x25,92	3,4 11,15	90	50	30	30
(A+B+C)	400 4304	27,40x14,60 89,89x47,90	3,40-3,85 11,15-12,63	484	200	80	114
(A+B)	292 3141,92	20,00x14,60 65,62x47,90	3,40-3,85 11,15-12,63	250	130	60	84
(B+C)	218 2345,68	14,80x14,60 48,56x47,90	3,4 11,15	200	100	60	66
Eleonora	67 720,92	13,13x5,05 43,08x16,57	3,1 10,17	50	30	30	-
Margherita	51 548,76	9,90x5,15 32,48x16,90	3,1 10,17	25	15	15	-
Studio Clotilde [°]	36 387,36	6,50x5,60 21,33x18,37	2,3 7,55	-	-	10	-
Cristina (A)	27 290,52	6,60x4,20 21,65x13,78	3,7 12,14	-	-	12	-
Cristina (B)	27 290,52	6,60x4,20 21,65x13,78	3,7 12,14	-	-	12	-
Cristina (A+B)	55 591,8	13,30x4,20 43,64x13,78	3,7 12,14	40	20	20	-
Studio Adelaide (A) [°]	23 247,48	3,60x6,40 11,81x21,00	2,3 7,55	-	-	9	-
Studio Adelaide (B) [°]	24 258,24	3,80x6,40 12,47x21,00	2,3 7,55	-	-	9	-
Le Regine by Eataly Restaurant [°]	294 3163,44	11,50x25,60 37,73x83,99	-	-	-	-	-
Le Regine by Eataly Bar [°]	-	8,00x10,00 26,25x32,81	-	-	-	-	-

[°] Daylight

[^] Cabaret style: Diameter tables 170 cm. up to 6 pax each